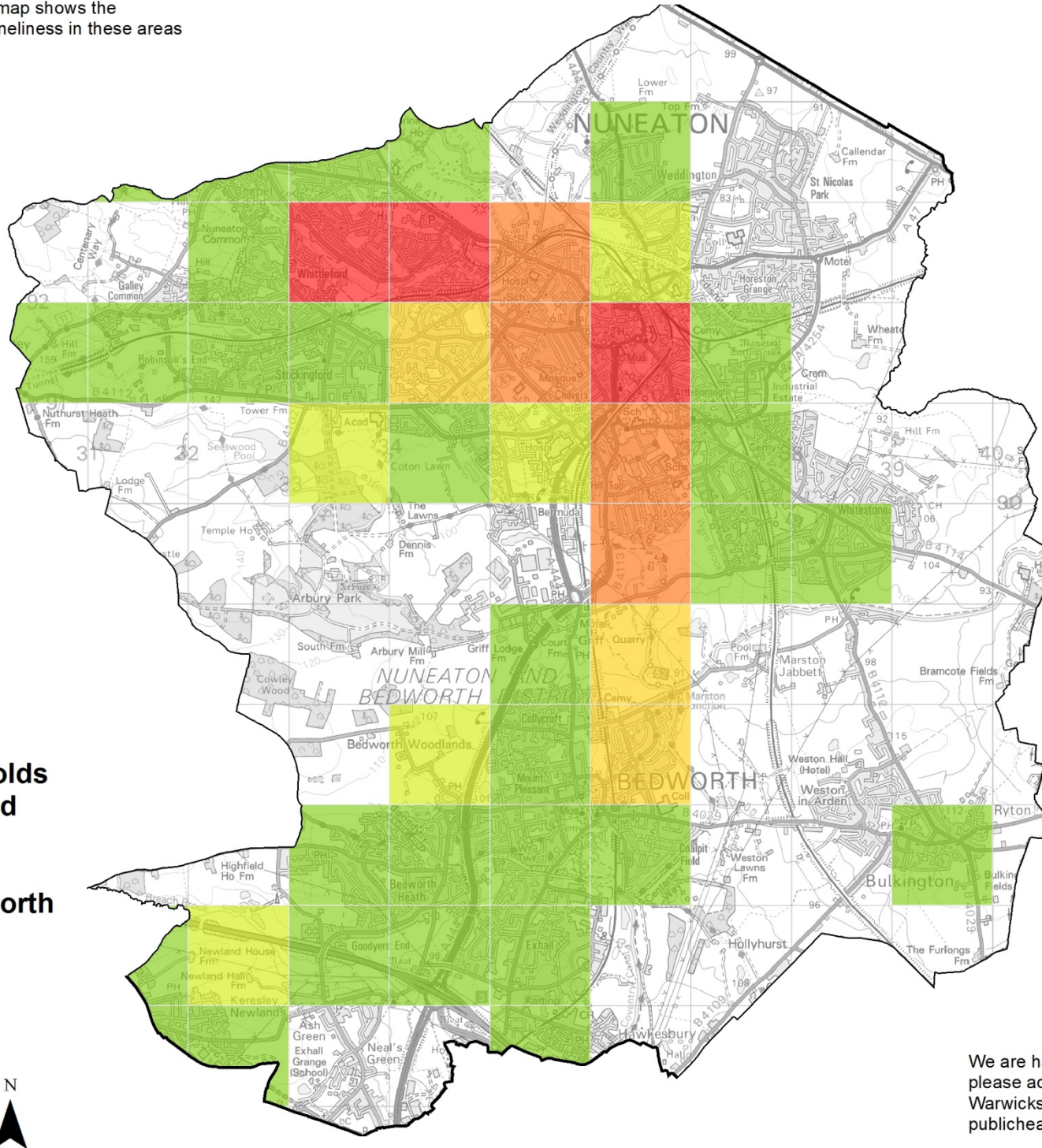


Each square is 2.5km by 2.5km. The map shows the percentage of households at risk of loneliness in these areas



**PUBLIC HEALTH  
WARWICKSHIRE**



**Percentage of households at risk of loneliness and social isolation (all identified residents) in Nuneaton and Bedworth**

- 1% - 18%
- 19% - 28%
- 29% - 37%
- 38% - 46%
- 47% - 56%



We are happy for you to use these maps, but please adequately reference 'Public Health Warwickshire'. For more information, contact [publichealthintelligence@warwickshire.gov.uk](mailto:publichealthintelligence@warwickshire.gov.uk)